

# GP310

PAINTLABEL®

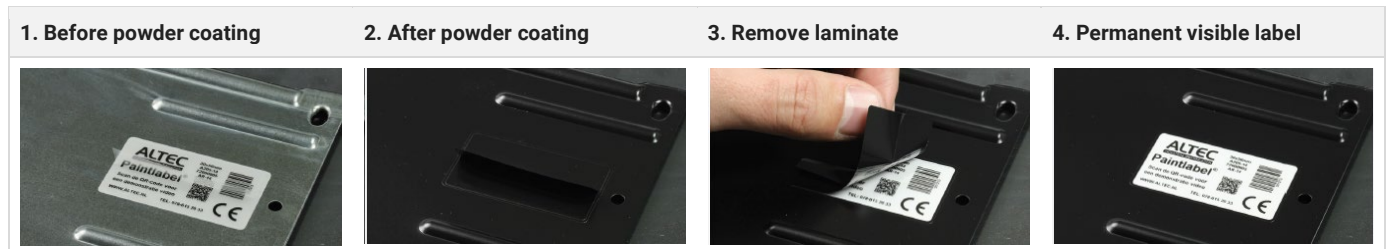


### Description

The Altec Paintlabel® is protected by durable twin-protection: An easily removable masking laminate on top and a permanent, transparent foil that shields the label during its complete life-cycle. The Altec Paintlabel® can withstand temperatures from minus 40°C up to 200°C, is resistant to the most solvents and has a very high abrasion resistance.

<b>Sizes</b>	30 x 12 mm / 30 x 56 mm / 48 x 89 mm
<b>Construction</b>	<p><b>4. Masking laminate</b> Removable clear polyester - to be removed after powder coating</p> <p><b>3. Protection laminate</b> Permanent clear polyester – will protect the print on the label and shields the print during its complete life-cycle</p> <p><b>2. Silver polyester label</b> Permanent silver polyester – which is the label where will be printed on</p> <p><b>1. Adhesive</b> Strong acrylic adhesive of 46 microns</p>
<b>Temperature resistance</b>	-40°C to 150°C (180°C for 30 minutes, 200°C for 15 minutes)
<b>Features</b>	ISO 9227 approved

The Altec PaintLabel® when used in the powder coating process



### Physical data

Surface	Initial (10 minute Dwell/RT)				Conditioned for 3 days at 22°C			
	180° Peel		90° Peel		180° Peel		90° Peel	
	Oz./In.	N/100mm	Oz./In.	N/100mm	Oz./In.	N/100mm	Oz./In.	N/100mm
Stainless steel	88	89	63	69	96	105	75	82
Polycarbonate	90	98	65	71	94	103	69	76
Polypropylene	73	80	29	32	83	91	31	34
Glass	93	102	69	76	99	108	77	84
HD Polyethylene	54	59	27	30	56	63	32	35
LD Polyethylene	53	58	30	32	56	61	37	40
Smooth powder coating	85	93	-	-	89	97	-	-
Finely textured powder coating*	49	54	-	-	52	57	-	-

\*Calculated using averages of different powder coating surfaces

Surface	Conditioned for 3 days at 49°C				Conditioned for 24 hours at 32°C and at 90% Relative Humidity			
	180° Peel		90° Peel		180° Peel		90° Peel	
	Oz./In.	N/100mm	Oz./In.	N/100mm	Oz./In.	N/100mm	Oz./In.	N/100mm
Stainless steel	108	118	96	105	99	108	81	89
Polycarbonate	66	72	34	37	77	84	59	64
Polypropylene	81	89	33	16	78	85	47	51
Glass	106	116	86	94	89	97	72	79
HD Polyethylene	56	61	32	35	50	55	38	42
LD Polyethylene	15	16	14	15	43	47	40	44
Smooth powder coating	93	102	-	-	88	96	-	-
Finely textured powder coating*	56	61	-	-	50	55	-	-

\*Calculated using averages of different powder coating surfaces

### Environmental performance

Chemical	Adhesion to stainless steel		Appearance	Edge penetration
	Oz./In.	N/100mm	Visual	Millimeters
Isopropyl Alcohol	88	96	No change	0.6
Detergent 1% Alconox® Cleaner	92	101	No change	1.3
Engine oil (10W30) at 121°C	102	112	No change	0.6
Water for 48 hours	67	73	No change	0.1
pH 4	88	96	No change	0.7
pH 10	83	91	No change	1.4
409® Formula	92	101	No change	1.3
Toluene	50	55	No change	5.2
Acetone	59	65	No change	4.9
Brake Fluid	98	107	No change	0.1
Gasoline	56	61	No change	4.6
Diesel Fuel	93	102	No change	0.7
Mineral Spirits	80	88	No change	2.2
Hydraulic Fluid	96	105	No change	0.0

### REACH-RoHS statement

Altec only accept suppliers who are regulated under EU REACH and EU RoHS. Altec does not add any additional components to supplier materials. Altec ensure that suppliers fulfil the latest updated guidelines for (SVHC) EU REACH and EU RoHS before they are accepted as a supplier to Altec. Below product fulfil requirements in EU REACH No 1907/2006, EU RoHS and RoHS 3 EU 2015/863:

Description	Compliant to REACH, EU RoHS 2011/65/EU and EU RoHS 2 2015/863? (Yes/No)
ALTEC PAINTLABEL GP310	Yes

### Disclaimer

Values shown in this document are averages only. For legal reasons, we emphasize that the information on this data is available as is and that Altec gives no guarantees with respect to the accuracy and completeness nor with respect to interpretations made on the basis of this information.